

# Evaluation of Shear Bond Strength of Composite to Feldspathic Porcelain after Porcelain Surface Treatment with CO<sub>2</sub> and Er:YAG lasers

M. Shirinzad<sup>1</sup>, R. Fekrazad<sup>2</sup>, L. Rezaei Soufi<sup>3</sup>, E. Yarmohammadi<sup>4</sup>, SH. Mahmoudi<sup>4</sup>

<sup>1</sup> Assistant Professor, Department of Operative Dentistry, School of Dentistry, Hamadan University of Medical Science. Hamadan, Iran

<sup>2</sup> Associate Professor, School of Dentistry, AJA University of Medical Sciences and Member of Laser in Dentistry Research Center, School of Dentistry, Tehran University of Medical Sciences, Tehran, Iran

<sup>3</sup> Member of Dental Research Center and Associated Professor, Operative Dentistry, School of Dentistry, Hamadan University of Medical Science. Hamadan, Iran

<sup>4</sup> Assistant Professor, Department of Operative Dentistry, School of Dentistry, Jundi Shapur University of Medical Sciences, Ahwaz, Iran

## Abstract

**Background and Aim:** Fractured ceramic crowns can sometimes be repaired with composite resin. The aim of the current study was to determine the shear bond strength of composite to feldspathic porcelain after CO<sub>2</sub> and Er:YAG laser porcelain surface preparation.

**Materials and Methods:** In this in-vitro study, 36 feldspathic porcelain blocks measuring 1\*10\*10 mm were divided into 3 groups of 12. Porcelain surfaces in the first and second groups were treated with 1.8W CO<sub>2</sub> laser and 5W Er:YAG laser irradiation, respectively. Third group specimens were subjected to 9.5% hydrofluoric acid surface conditioning. All groups received application of silane and adhesive afterwards. A composite cylinder with 3.5 mm diameter and 5 mm height was bonded to specimens. In order to evaluate the shear bond strength, a Universal Testing Machine with a crosshead speed of 1 mm/min was used. Statistical analysis was performed using one-way ANOVA and Tukey's HSD test and P<0.05 was considered statistically significant.

**Results:** The mean shear bond strength values (MPa) were 13.03±2.57%, 12.02 ±3.4 and 19.23±4.62, for the first, second and third groups respectively. One-way ANOVA revealed a statistically significant difference in this respect between the three groups (P<0.001).

Tukey's HSD test demonstrated significant differences between the first and third groups (P=0.000) as well as the second and third groups (P=0.000). However, no significant difference was detected between the first and second groups (P=0.778).

**Conclusion:** Considering the study results, CO<sub>2</sub> or Er:YAG laser irradiation is not suggested as an appropriate alternative to hydrofluoric acid for surface preparation of feldspathic porcelain.

**Key Words:** Dental porcelain, laser, hydrofluoric acid, shear strength

✉ Corresponding author:  
E. Yarmohammadi, Assistant Professor, Department of Operative Dentistry, School of Dentistry, Jundi Shapur University of Medical Sciences, Ahwaz, Iran  
e.yarmohammadi@umsha.ac.ir

Received: 2 May 2012  
Accepted: 16 Aug 2012

Journal of Islamic Dental Association of IRAN (JIDAI) Summer 2013 ;25, (2)

## Introduction

Demand for esthetic dental treatment is rapidly growing. In a research by Goldstein about the principles of facial beauty, it was stated that smile ranks second after eyes as the most important parameter of facial beauty and dentists play an important role in

correcting the smile [1]. Among all esthetic dental treatments, full porcelain crowns can greatly contribute to patients' esthetics due to their excellent biocompatibility and high translucency [2]. Insufficient aesthetics or translucency, inadequate porcelain-metal bond and totally different physical

properties of porcelain and metal porcelain fused to metal crowns all led to the currently growing popularity of full ceramic crowns [3-6].

In 1980, introduction of enamel etching with phosphoric acid and ceramic etching with hydrofluoric acid techniques led to the application of resin cements for bonding of ceramic to enamel [7]. However, full porcelain crowns in service are at constant risk of porcelain separation, fracture or ditching due to various reasons. In these cases, other parts of the crown usually remain intact. Two solutions are available under these circumstances: Replacement of the full porcelain crown which is expensive and time-consuming or repairing the crown in patient's mouth with composite resin. Among different types of currently used dental porcelains, feldspathic porcelain has many applications due to its high translucency and similarity to tooth enamel and is one of the most commonly used porcelains in dentistry and full ceramic crowns in particular [8]. Several methods have been recommended for composite-porcelain bonding, such as porcelain surface preparation using a coarse bur, sandblasting with aluminum oxide particles and etching with hydrofluoric acid [9,10]. Also, application of Silane Coupling agent has been introduced as an effective measure for increasing bond strength [11-14]. Application of hydrofluoric acid produces porosities and dissolves the glassy phase of ceramic. Silane conditions the surface and enhances the formation of a covalent bond between ceramic and composite [15]. Laser irradiation for porcelain surface preparation is a recent technique for achieving a higher quality bond between the porcelain and composite. Different types of lasers are used in dentistry [16]. Akova et al. showed that CO<sub>2</sub> laser irradiation (Super Pulse, 2W, 20 seconds) provided sufficient bond of brackets to feldspathic porcelain and silane application increased the bond stability [17]. Akyilek et al. reported that application of 9.5% hydrofluoric acid created the highest bond strength to feldspathic porcelain. Also, application of acid and laser together increased the bond strength, but this strength was lower than that of acid conditioning alone [18]. Ferreira et al. demonstrated that Er: YAG laser application caused the highest bond strength followed by acid and Nd:YAG laser application; however, the dif-

ferences between these three groups were not significant. They concluded that Nd:YAG and Er:YAG laser can be used instead of acid for porcelain surface preparation [19]. The obtained controversial results indicate that porcelain surface preparation with laser needs to be further investigated. The goal of this study was to determine the shear bond strength of composite to feldspathic porcelain following porcelain surface preparation with CO<sub>2</sub> and Er:YAG lasers.

## Materials and Methods

This laboratory, experimental study was conducted on 48 porcelain blocks.

### *Preparation of porcelain blocks:*

Porcelain blocks measuring 1×10×10 mm were fabricated by using EX3 feldspathic porcelain (Noritake, Japan) in furnace (P30, Ivoclar, Liechtenstein, Switzerland) at 930°C for 15 minutes.

### *Laser irradiation:*

A) Pilot study: Since the majority of studies on porcelain surface preparation are implemented on Zirconium, at first two different powers of CO<sub>2</sub> and Er:YAG (Deka, Italy) lasers were tested on 12 feldspathic porcelain blocks and the SEM (Scanning Electron Microscopy) results were examined by three experts as single blind to find out which CO<sub>2</sub> and Er:YAG laser powers have the greatest effect on feldspathic porcelain for use in this study. Prior to laser irradiation, surface glaze of feldspathic porcelain was removed by composite polishing bur 850.016 (Tizkavan, Tehran, Iran). In Er:YAG laser group, Er:YAG laser with a wavelength of 2940 nanometer at two different powers along with Graphite powder (Sosmar, Iran) was used [19]. Porcelain surface was coated with graphite powder prior to laser irradiation. Non-contact mode Er:YAG laser with 4 and 5 W power, 10 Hz frequency, 400 mJ energy, 450 microsecond pulse duration, 0.5 J/mm<sup>2</sup> energy density, 5 mm distance, 15 seconds exposure time and 1 mm beam diameter was irradiated. In CO<sub>2</sub> laser group, first laser with 10600 nanometer wavelength, 1.8 Watt power, 1 mm beam diameter, 10 Hz frequency, 5 millisecond pulse duration and 0.01 J/mm<sup>2</sup> energy density with surface at focal distance was irradiated for 15 seconds and then CO<sub>2</sub> laser with 2.4 W power, 10600 nanometer wavelength, 20 Hz frequency, 2.5 millisecond pulse duration, 0.008

J/mm<sup>2</sup> energy density and 1mm beam diameter with surface at focal distance was radiated for 15 seconds.

B) Main study: After selecting the power for each laser, 12 porcelain blocks in group 1 and 12 porcelain blocks in group 2 received CO<sub>2</sub> and Er:YAG laser irradiation for surface preparation, respectively. Porcelain etching:

Surface glaze of 12 porcelain blocks in group 3 was removed by composite polishing bur 850.016 and 9.5% hydrofluoric acid (Basico, USA) was applied to the surface, remained for two minutes, rinsed for 15 seconds and air dried for 5 seconds.

SEM:

Acid and laser-treated specimens were gold coated by Gold-Palladium alloy using Sputter Coater Apparatus model SC7620 (Leo, Germany) and examined by Scanning Electron Microscope model 1450 VP (Leo, Germany) set at 20 kV acceleration voltage, 3 nanometer resolution and 1000 x magnification.

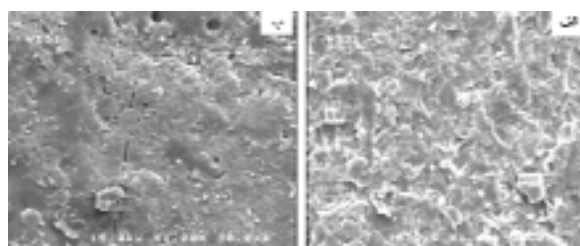
Application of bonding agent and composite resin: First, a thin layer of silane was applied to all samples, air dried for 30 seconds with air spray, and then Scotch bond multi-purpose adhesive (3M, USA) from the third bottle was used. The adhesive was light cured from 1mm distance for 20 seconds by the light-curing unit (Astralis 7, Vivadent, Liechtenstein, Switzerland) with 450 mW/ Cm<sup>2</sup> intensity. In order to fabricate a composite cylinder to be bonded to porcelain surface, a transparent cylinder with 2 mm internal diameter and 4mm height and composite Z<sub>250</sub> (3M, USA) with A2 shade were used. With a suitable hand instrument, the composite was applied to the transparent cylinder. The cylinder was then perpendicularly placed in the center of the porcelain surface and light cured at 1mm distance from the top and both sides for 20 seconds each. For measuring the shear bond strength, Universal Testing Machine was used with a cross-head speed of 1mm/minute, preload of 2N and 2 kN load cell. The samples were subjected to load until failure. A computer and a data acquisition system recorded the data. Fracture modes were studied by a stereomicroscope (SZ 40, Olympus, Tokyo, Japan) with 40X magnification and were categorized as cohesive (in composite or porcelain), adhesive

(at the composite-porcelain interface) and mixed (a combination of both). The obtained data were analyzed using SPSS version 13.0 software. One-way ANOVA was applied and pair-wise comparison of groups for shear bond strength was carried out using Tukey's HSD test. ( $P < 0.05$ ) was considered statistically significant.

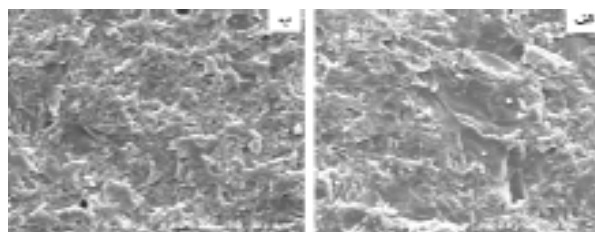
## Results

A) Result of the pilot study:

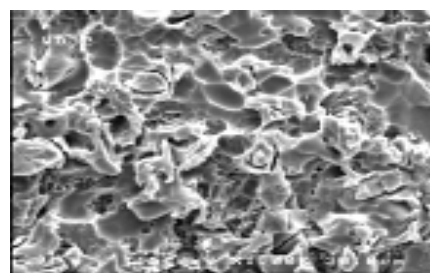
The SEM results revealed that CO<sub>2</sub> laser with 1.8 W power and Er:YAG laser with 5 W power caused minor cracks and the highest surface roughness on feldspathic porcelain (Figure, 1-3).



**Fig 1:** Porcelain surface prepared with CO<sub>2</sub> laser: A) 1.8 Watt and B) 2.4 Watt



**Fig 2:** Porcelain surface prepared with Er:YAG laser: A) 4 W and B) 5 W



**Fig 3:** Porcelain surface prepared with hydrofluoric acid

B) The results of main study:

Mean, standard deviation, minimum and maximum values of shear bond strength (MPa) in 3 study groups are shown in Table 1. In order to ensure the normal distribution of samples, One Sample Kolmogorov Smirnov test and for statistical

analysis, univariate ANOVA were applied and revealed significant differences in meanshear bond strength of different understudy groups ( $P<0.001$ ). The resultsof Tukey's HSD test demonstrated significantly highershear bond strength in acidtreated group compared to the laser groups ( $P<0.001$ ). However, no statistically significant differences were noted betweenthe laser groups (1 and 2) ( $P=0.778$ ). The frequency of various modes of failure is presented in Table 2.

**Table 1:** Porcelain surfaceprepared with hydrofluoric acid

Group	Number	Minimum	Maximum	Mean± SD
1	12	7/11	15/94	13/03±2/57
2	12	6/49	15/65	12/02±3/4
3	12	11/63	24/91	19/23±4/62

**Table 2:** Frequency distribution of different failure modes in understudy groups

Failure type	Group 1	Group 2	Group 3	Total
Adhesive	8	10	3	21
Cohesive	0	0	5	5
Mixed	4	2	4	10

## Discussion

At present, use of laser in dentistry is becoming increasingly popular and it is necessary to clarify its different clinical applications. On the other hand, demand forfull porcelain crownsis increasing because oftheir high translucency and excellentbiocompatibility [3, 8]. Full porcelain crowns may undergo fracture or chipping during their clinical use; in these cases we mayuse composite resins to repair the porcelain.In order to achieve a strong bond between the composite and porcelain, several techniques are used for porcelain surface preparation.Limited number ofstudies have evaluated porcelain surface preparation with laser yielding different results. In this study, 1.8 and 2.4 W powers of CO<sub>2</sub> laser and 4 and 5 Wpowersof Er:YAGlaser were selected and then SEM was used to find out the optimal power with the best effect on porcelain. Studieshave shownthat lower powers of Er:YAGlaser do not have an adequate effect on porcelain surface and are not able to create optimal surface roughness [18,19]. The conven-

tional graphite causedgreaterabsorption of Er:YAG laser by the porcelain surface [19].

In this study,after porcelain surface preparation with acid or laser, silane wasappliedto enhance the bond betweencomposite and porcelain. Shear bond strength of composite to feldspathic porcelain following porcelain surface preparation with hydrofluoric acid was greater than the rate following porcelain surface preparationwith CO<sub>2</sub> and Er:YAG lasers. Due to the dissolution of minerals by hydrofluoric acid, porosities are formed ontheporcelain surface causing micromechanicalretention; while CO<sub>2</sub> and Er:YAG laser screateporcelain surface roughness but are not able to dissolve the mineral contentyielding low or nomicromechanical retention.

Akovaet al, in their study on porcelain surface preparationwith CO<sub>2</sub> laser for bondingof brackets to feldspathic porcelain in ceramic-metal crowns concluded that CO<sub>2</sub> laser canprovide sufficient bond between bracket and feldspathic porcelain of ceramic-metal crowns. Akyilet al.evaluated theshear bond strengthof composite resin to feldspathic porcelainafter porcelain surface treatment withlaser and acid etching and concluded that preparation with hydrofluoric acid createdhigher bond strength than preparation with Er:YAGand Nd:YAG lasers. Ferreiaet al.studied theshear bond strengthof resin cement to feldspathic porcelain following porcelain preparation by sandblastingwithaluminum oxide particlesand Er:YAG and Nd:YAGlasers and demonstrated that the efficacy of porcelainsurface preparationwith Er:YAG and Nd:YAG laserswas similar to that of hydrofluoric acid providing optimalshear bond strength of resin cement to feldspathic porcelain. However, different results were obtained in our study. This differencemay be attributed to different laboratory conditions, use of hydroxyapatiteprior toEr:YAG laser irradiation and application of different bondingagents and composite resins.

The mode offailure was adhesive or mixed in CO<sub>2</sub> and Er:YAG laser groupsand the cohesive failure was not observed. In hydrofluoric acidgroup, the observed mode of failure was of cohesive type in the composite resin. The adhesive mode of failure is due to the weak bond between the porcelain surface prepared with laser and composite resin. In

laser groups, failures were mostly of adhesive or mixed types at the resin-porcelain interface. In hydrofluoric acid group, the majority of observed failures were of cohesive type attributed to the higher bond strength of composite to feldspathic porcelain.

### Conclusion

Based on the obtained results, preparation of feldspathic porcelain surface with hydrofluoric acid is more effective than Er:YAG and CO<sub>2</sub> laser application for achieving a suitable bond strength between composite resin and feldspathic porcelain. Role of other laser parameters needs to be illuminated in future studies to further improve the efficacy of laser for porcelain surface treatment.

### REFERENCES

- 1- Kerns LL, Silveira AM, Kerns DG, Regennitter FJ. Esthetic preference of the frontal and profile views of the same smile. *J Esthet Dent*. 1997Mar; 9(2):76-85.
- 2- Spear F, Holloway J. Which all-ceramic system is optimal for anterior esthetics? *J Am Dent Assoc*. 2008Sep; 139 Suppl: 19S-24S.
- 3- Kussano CM, Bonfante G, Batista JG, Pinto JH. Evaluation of shear bond strength of composite to porcelain according to surface treatment. *Brazil Den J*. 2003Oct; 14(2):57-65.
- 4- Kelsey WP, Latta MA, Stanislav CM, Shaddy RS. Comparison of composite resin-to-porcelain bond strength with three adhesives. *Gen Dent*. 2000Jul-Aug; 48(4):418-21.
- 5- Ozcan M, Niedermeier W. Clinical study on the reasons for and location of failures of metal-ceramic restorations and survival of repairs. *Int J Prosthodont*. 2002 May-Jun; 15(3):299-302.
- 6- Noel LG, Michell WC. Porcelain veneer repair of prostheses. *Gen Dent*. 1997 Mar-Apr; 45(8): 182-5.
- 7- Horn HR. Porcelain laminate veneers bonded to etched enamel. *Dent Clin North Am*. 1983 Oct; 27(4):671-84.
- 8- Fabianelli A, Pollington S, Papacchini F, Goracci C, Cantoro A, Ferrari M, et al. The effect of different surface treatments on bond strength between leucite reinforced feldspathic ceramic and composite resin. *J Dent*. 2010 Jan; 38(4):39-43.
- 9- Suliman AH, Swift EJ Jr, Perdigao J. Effects of surface treatment and bonding agent on bond strength of composite resin to porcelain. *J Prosthet Dent*. 1993Aug; 70(2):118-120.
- 10- Diaz-Arnold AM, Schneider RL, Aquilino SA. Bond strengths of intraoral porcelain repair materials. *J prosthet Dent*. 1989Mar; 61(4):305-9.
- 11- Ozcan M, Valandro LF, Amaral R, Leite F, Bottino MA. Bond strength durability of a resin composite on a reinforced ceramic using various repair systems. *Dent Mater* 2009 Dec; 25(2):1477-83.
- 12- Matinlinna JP, Lassila LV, Ozcan M, Yli-Urpo A, Vallittu PK. An introduction to silanes and their clinical applications in dentistry. *Int J Prosthodont*. 2004Mar-Apr; 14(7):155-67.
- 13- Roulet JF, Söderholm KJ, Longmate J. Effect of treatment and storage conditions on ceramic/ composite bond strength. *J Dent Res*. 2002Jan; 14(5):80-92.
- 14- Blatz MB, Sadam A, Glatz U. The effect of silica coating on resin bond to intaglio surface of procera all ceramic restorations. *Quintessence Int*. 2003 Jul-Aug; 34(5):542-547.
- 15- Al Edris A, Al Jabr A, Cooley RL, Barghi N. SEM evaluation of etch patterns by three etchants on three porcelain. *Dent Mater*. 1990 Dec; 64(7):734-9.
- 16- Chen JR, Oka K, Kawano T, Goto T, Ichikawa T. Carbon dioxide laser application enhances the effect of silane primer on the shear bond strength between porcelain and composite resin. *Dent Mater J*. 2010Nov; 200(6):731-7.
- 17- Akova T, Yoldas O, Toroglu MS, Uysal H. Porcelain surface treatment by laser bracket- porcelain bonding. *Am J Orthod Dentofacial Orthop*. 2005Nov; 128(5): 630-7.
- 18- Akyil MS, Yilmaz A, Karaalioglu OF, Duymuş ZY. Shear bond strength of repair composite resin to an acid-etched and a laser – irradiated feldspathic ceramic surface. *Photomed Laser Surg*. 2010 Aug; 24(8):539-545.
- 19- Da Silva Ferreira S, Hanashiro FS, De Souza-Zaroni WC, Turbino ML, Youssef MN. Influence of aluminum oxide sandblasting associated with Nd: YAG or Er:YAG lasers on shear bond strength of a feldspathic ceramic to resin cement. *Photomed Laser Surg*. 2010Aug; 24(8):471-5.